

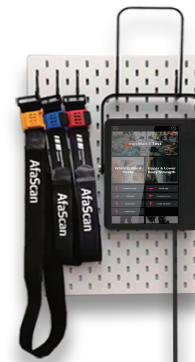
AFaScan Leader Series

Mobile and Powerful

The mobile AfaScan Leader series can conduct professional evaluation and training in various indoor and outdoor sports and training scenes. It has full capabilities of Scanleader Series, while it is more convenient.

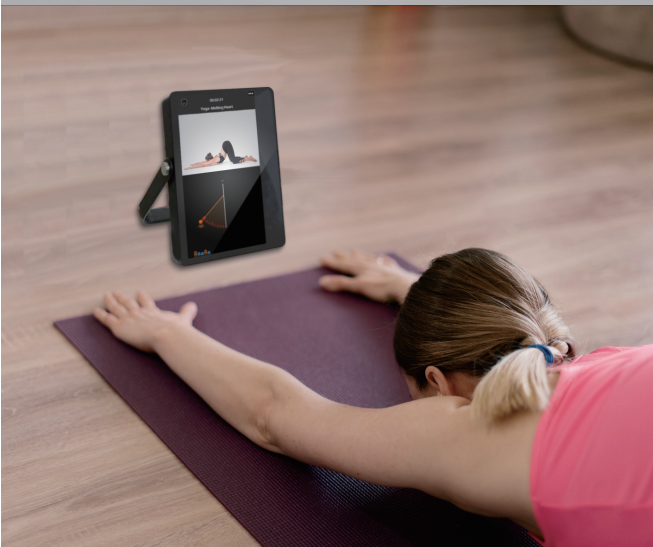


Leader 1



10.1 Inch Pad

HDMI interface for
TV connection



AfaScan Leader2



Leader1 + Body Composition Analysis

AfaScan Leader3



Leader2 + Dual Force Plate System

AfaScan
Leader2

Large Display



For a larger display, the leader series can connect to the TV through the HDMI interface.

Note: Accessories, such as TV, TV stand and tool board in the picture, are not included in the product. It needs to be purchased additionally.

AfaScan **Leader Series**

| Models | Leader 1 | Leader 2 | Leader 3 |
|---|----------|----------|----------|
| Functions | | | |
| Functional Fitness Assessments -Ironmen 7 Tasks | ✓ | ✓ | ✓ |
| Yoga/Pilates Fitness Assessments | ✓ | ✓ | ✓ |
| Joint Range of Motion | ✓ | ✓ | ✓ |
| Body Composition Analysis | ✓ | ✓ | ✓ |
| Juvenile Athletic Ability Assessments (7-15 years old) | ✓ | ✓ | ✓ |
| Juvenile Athletic Ability Assessments (3-6 years old) | ✓ | ✓ | ✓ |
| Body Composition Analysis | | ✓ | ✓ |
| Hardware | | | |
| Mainframe (10.1" Touch Screen Display) | ✓ | ✓ | ✓ |
| High Accuracy Force Plate System | Single | Single | Dual |
| Wireless Wearable Sensors (Set) | 1 | 1 | 1 |
| Body Composition Analysis Module | | ✓ | ✓ |

AfaScan Scanleader Technical Specifications

| | | |
|-----------|---|---|
| Mainframe | Equipment Dimensions Equipment Weight Interface Ports Power Supply Touch Screen Display | 650 mm W x1230 mm L x150 mm H 35 kg USB2.0 port x1 , HDMI port x1 , RJ45 portx1 AC 220V±20% , 100 ~ 240V 43 inch, 1080*1920 |
|-----------|---|---|

| | | |
|---------------------------|--|--|
| Wireless Wearable Sensors | Dimensions(WxDxH) Quantity Sampling Rate Acceleration Range Acceleration Accuracy Rotation Range Rotation Accuracy Channel Frequency Wireless Protocol | 36.5 mm L x 30 mm W x 13 mm H 2 sets (3 sensors per set) 200 Hz 16G, 200G Full Scale 0.488mg / 6.1mg 2000 dps 70m dps 802.15.4 2.4 G |
|---------------------------|--|--|

| | | |
|----------------------------------|--|--|
| High Accuracy Force Plate-Single | Outputs Unit Dimensions Weight Sampling Rate Measurement Range | Max Force, Average Force, Center of Force, Leg Muscle Strength, Balance, Rate of Force Development and etc. 650 mm W x 500 mm L x 90 mm H 21.5 kg 200 Hz 2000 kg |
|----------------------------------|--|--|

| | | |
|--------------------------------|--|--|
| High Accuracy Force Plate-Dual | Outputs Unit Dimensions Weight Sampling Rate Measurement Range | Max Force, Average Force, Center of Force, Leg Muscle Strength, Balance, Rate of Force Development and etc. 660 mm W x 500 mm L x 90 mm H 40 kg 200 Hz 2000 kg |
|--------------------------------|--|--|

| | | |
|----------------------------------|---------------------------------|------------------------------------|
| Body Composition Analysis Module | Interface Ports Power Supply | 8-point tactile electrode 5.0 V |
|----------------------------------|---------------------------------|------------------------------------|

AfaScan Leader Technical Specifications

| | | |
|----------------------------------|--|--|
| Mainframe | Equipment Dimensions Equipment Weight Interface Ports Power Supply Touch Screen Display | 190 mm W x 250 mm L x 30 mm H 1.0 kg USB2.0 port x3 , HDMI port x1 AC 220V±20% , 100 ~ 240V 10.1 inch, 1080 x1920 |
| Wireless Wearable Sensors | Dimensions(WxDxH) Quantity Sampling Rate Acceleration Range Acceleration Accuracy Rotation Range Rotation Accuracy Channel Frequency Wireless Protocol | 36.5 mm L x 30 mm W x 13 mm H 2 sets (3 sensors per set) 200 Hz 16G, 200G Full Scale 0.488mg / 6.1mg 2000 dps 70m dps 802.15.4 2.4 G |
| High Accuracy Force Plate-Single | Outputs Unit Dimensions Weight Sampling Rate Measurement Range | Max Force, Average Force, Center of Force, Leg Muscle Strength, Balance, Rate of Force Development and etc. 650 mm W x 500 mm L x 90 mm H 21.5 kg 200 Hz 2000 kg |
| High Accuracy Force Plate-Dual | Outputs Unit Dimensions Weight Sampling Rate Measurement Range | Max Force, Average Force, Center of Force, Leg Muscle Strength, Balance, Rate of Force Development and etc. 660 mm W x 500 mm L x 90 mm H 40 kg 200 Hz 2000 kg |
| Body Composition Analysis Module | Interface Ports Power Supply | 8-point tactile electrode 5.0 V |